

Waltraud

Woman size: M (64 stitches)

You'll need:

- 100 grams of your favourite sock yarn (approx. 420 m)
- 2,5 mm circular needles oder double pointed needles

Gauge:

30 stitches x 42 rows = 10 x 10 cm in stockinette stitch

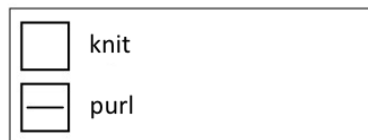
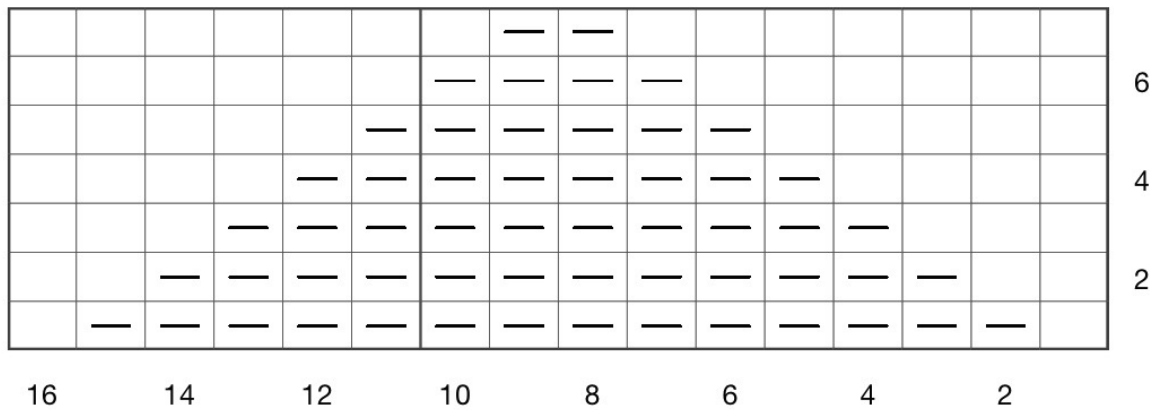
Pattern:

Cast on 64 stitches and join to round.

Begin with the ribbing: * knit 2, purl 2 * repeat around. Work at least 15 rounds.

Work 3 rounds in reverse stockinette stitch.

Now start knitting the chart.



Continue in stockinette stitch.



© Michaela Kiesel www.wolltiger.at

michaela@wolltiger.at

Ravelry: [Floxine](#)